

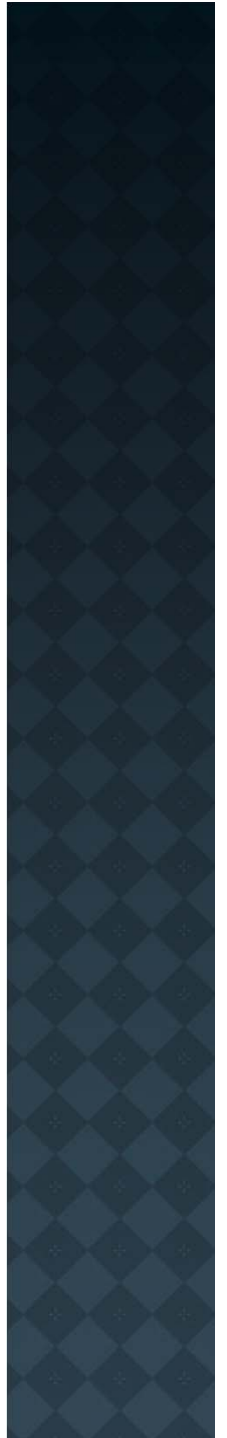
ALL THINGS NEW

2010 Front Royal UMC 5 Talent Goal Results

Our goals challenge us to be faithful, fruitful servants
and are guided by our Wesleyan Values.

FRONT ROYAL UMC VISION

The Front Royal United Methodist Church is a community of Christians where all people are welcome. We are disciples who glorify God in worship and strengthen one another through fellowship. Through education, we empower all to grow in grace and in their knowledge and love of God. Ultimately, Christ's love is evident through joyful mission to those in spiritual and physical need.



5 TALENT GOALS & OWNERSHIP

Mission Leg owns

Ministry With the Poor

Worship Leg owns

Worship Attendance

Evangelism owns

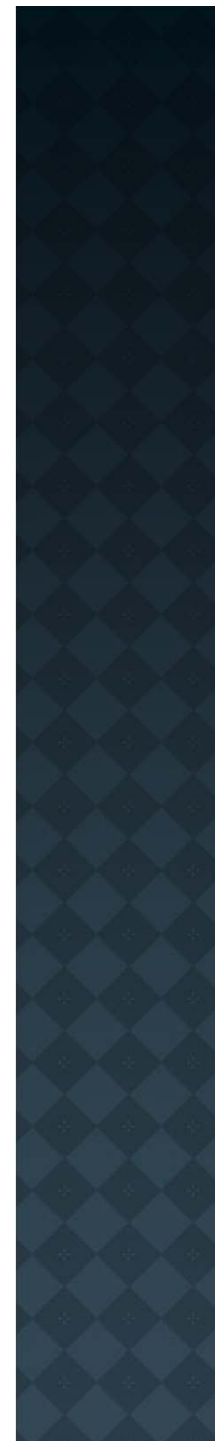
Professions of Faith

Education Leg owns

Small Group Formation

Stewardship owns

Annual Giving Growth

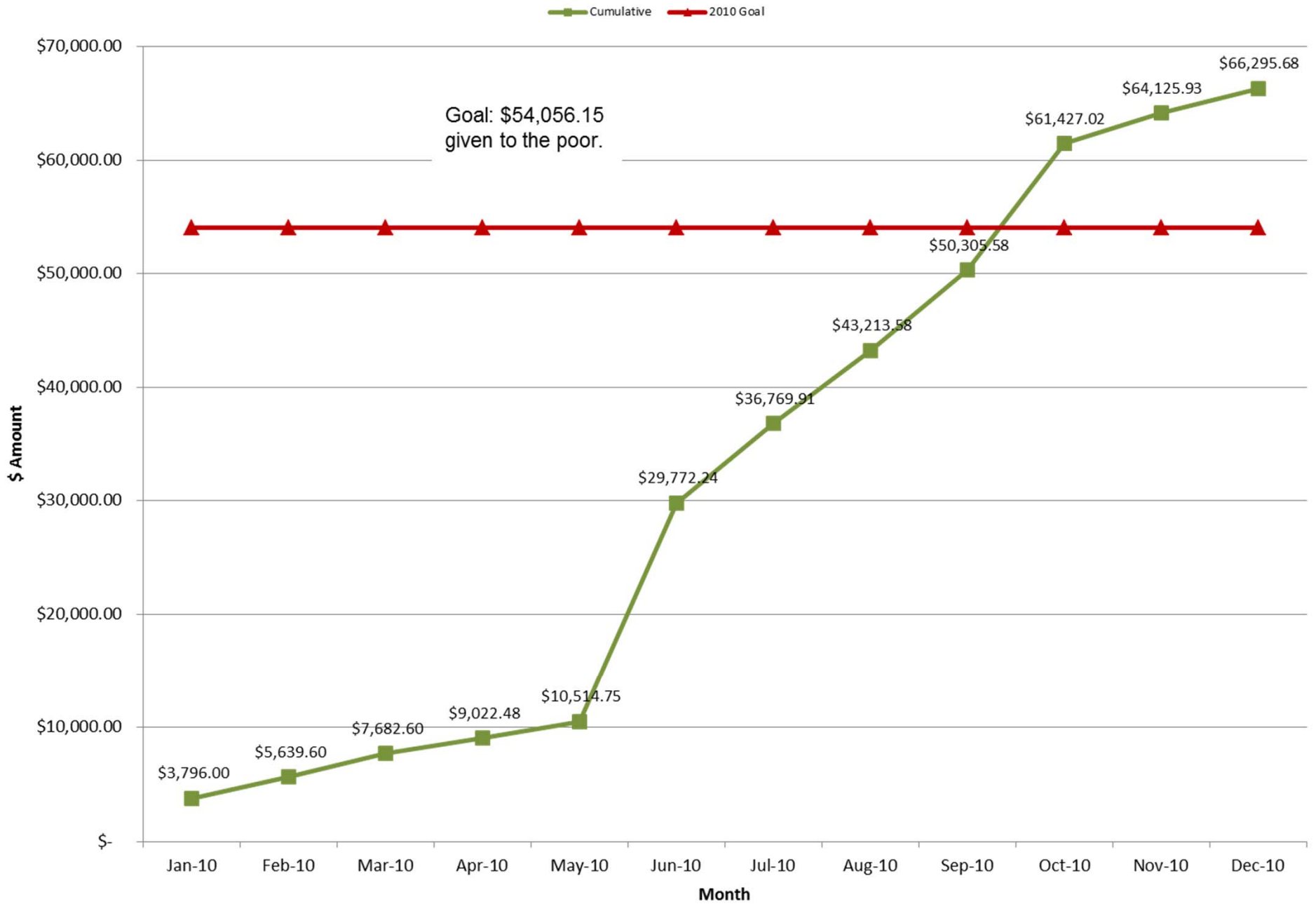


MINISTRY WITH THE POOR

This goal seeks to measure the total amount given by our congregation (from all sources) as a percentage of our total operational (non-capital) giving. Sources include general budget giving, as well as designated giving by the UMW, UMM, Pastor's Discretionary fund, disaster relief, UMVIM trips, advance offerings, conference offerings, Heart Havens, UM Family Services, and our World Service apportionment, as well as any other giving targeted toward the poor and those experiencing disaster.

Goal: Ministry with the poor is 10% of our total actual giving (non-capital) or \$54,056 for 2010

2010 Monies Given to the Poor versus Goal

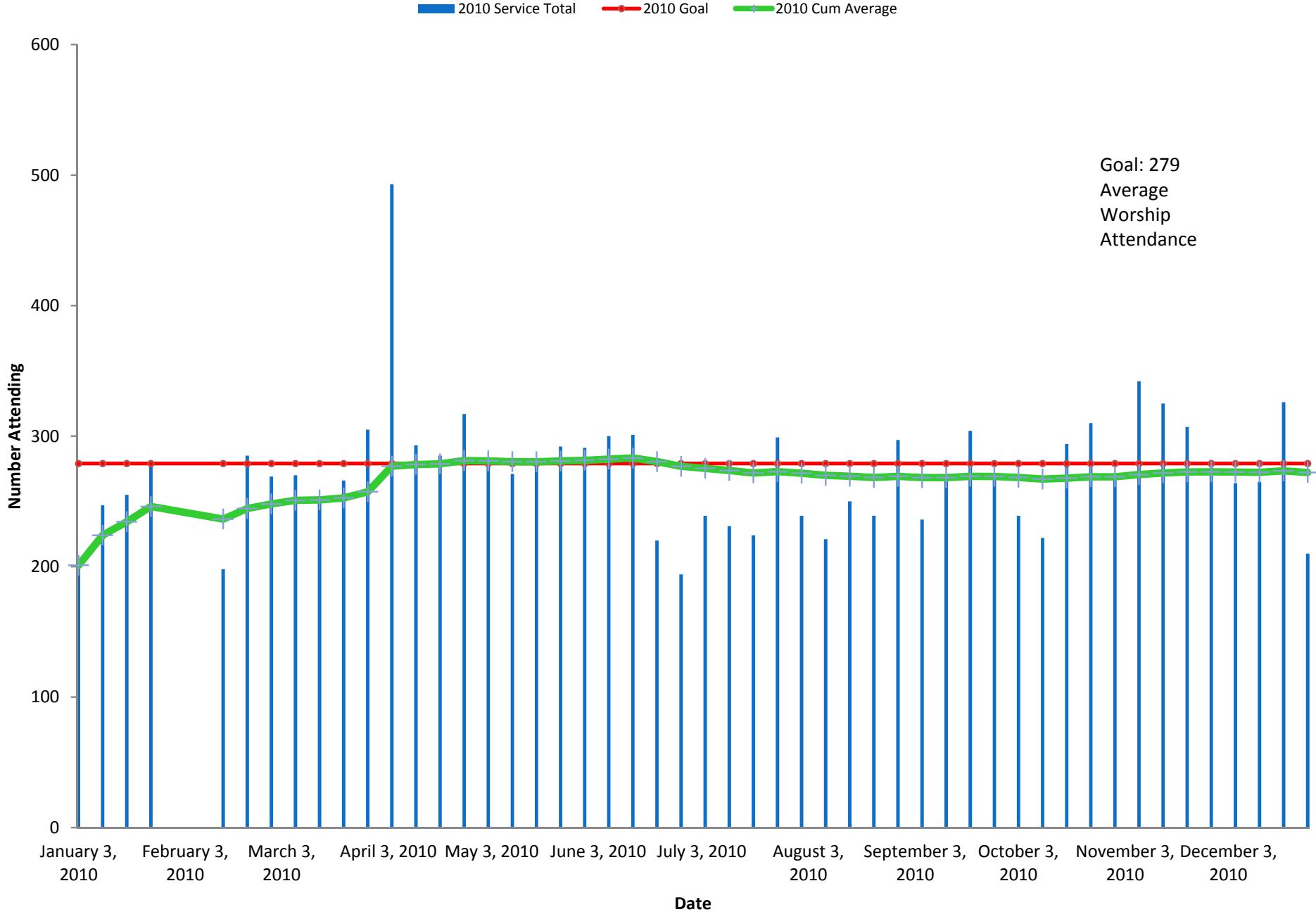


WORSHIP

This is the average weekly attendance at the worship services, including all regular weekly services. It does not include special services or non-regular services such as Christmas Eve, Good Friday, Maundy Thursday, etc.

Goal: Increase average worship attendance by 5% each year. For 2010, the goal was 279 average attendance per week for both services.

2010 Total Worship Attendance vs Goal with Cum Average

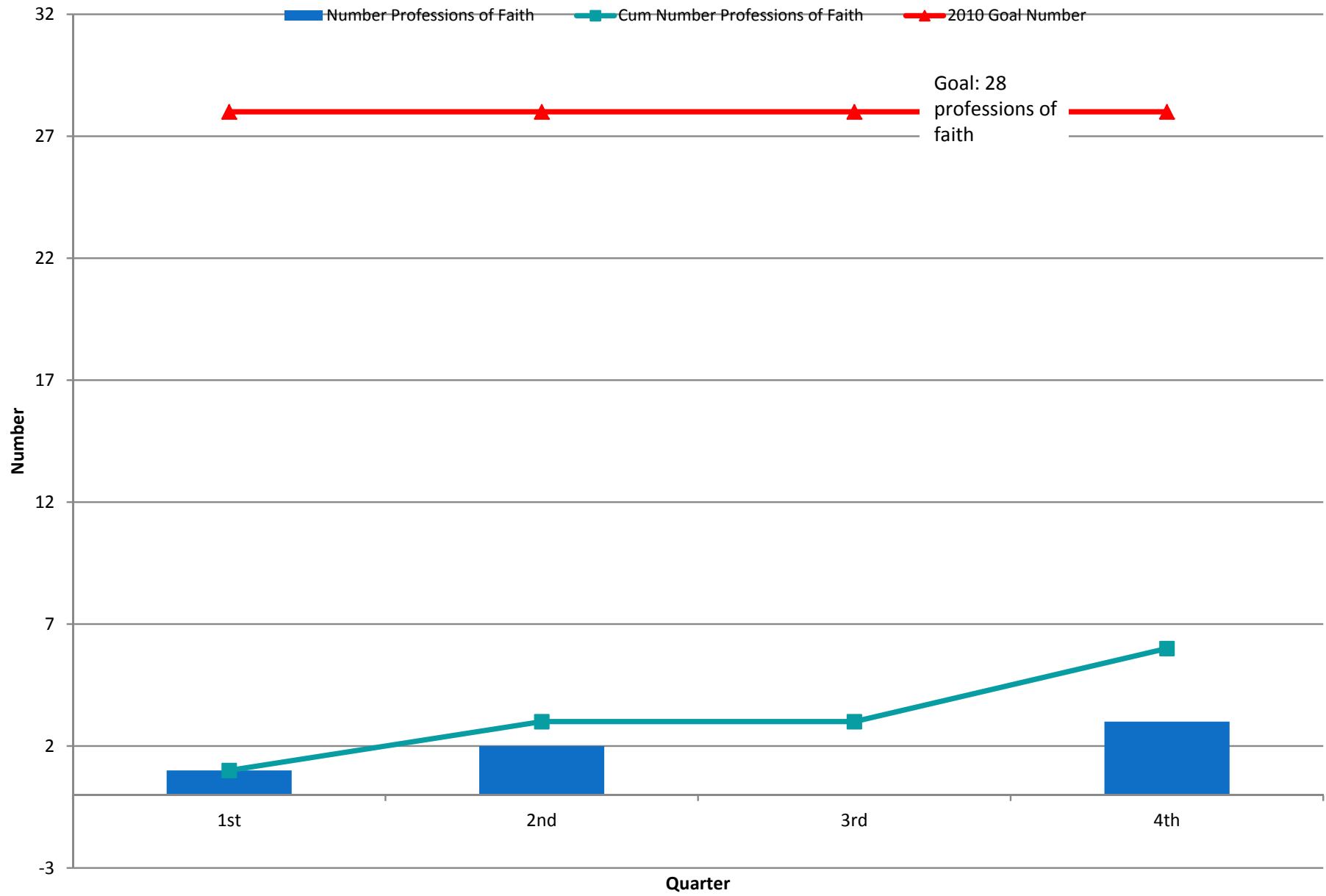


EVANGELISM

This goal seeks to measure the number of people who join our church in a year by profession of faith as opposed to transfer from other UM churches or denominations. This number includes those that join by confirmation.

Goal: To have at least 10% of average worship attendance join by Profession of Faith, or 28 in 2010.

2010 Number Professions of Faith

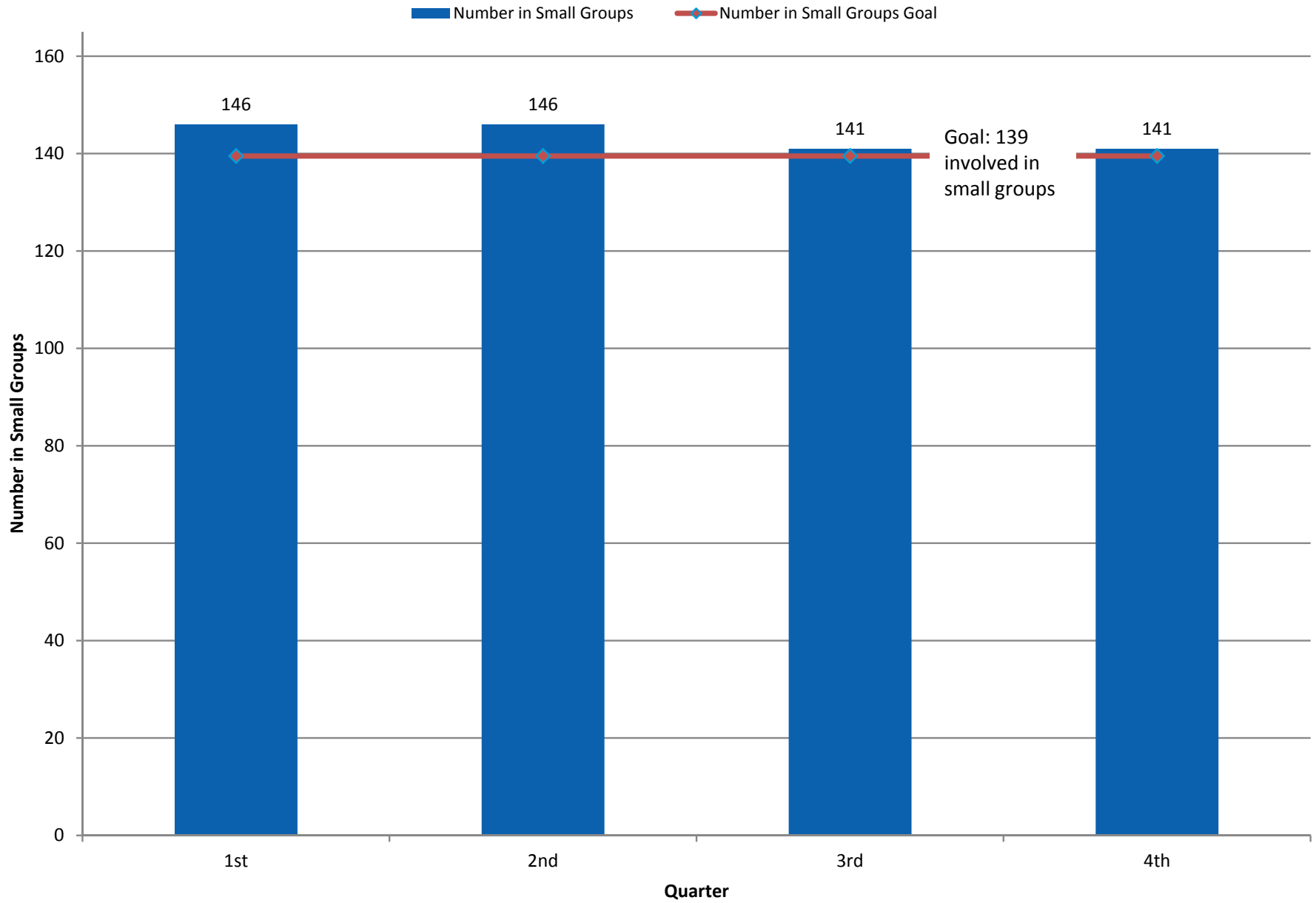


FAITH DEVELOPMENT

This goal seeks to ensure we are guiding FRUMC toward small group formation. Small groups are ongoing regular gatherings engaged in spiritual development. This includes adult and youth Sunday school classes but not children's classes, nurseries, or short-term informational classes.

Goal: To have at least 50% of the average worship attendance involved in a small group or 139 in 2010.

2010 Number Involved in Small Groups vs Goal

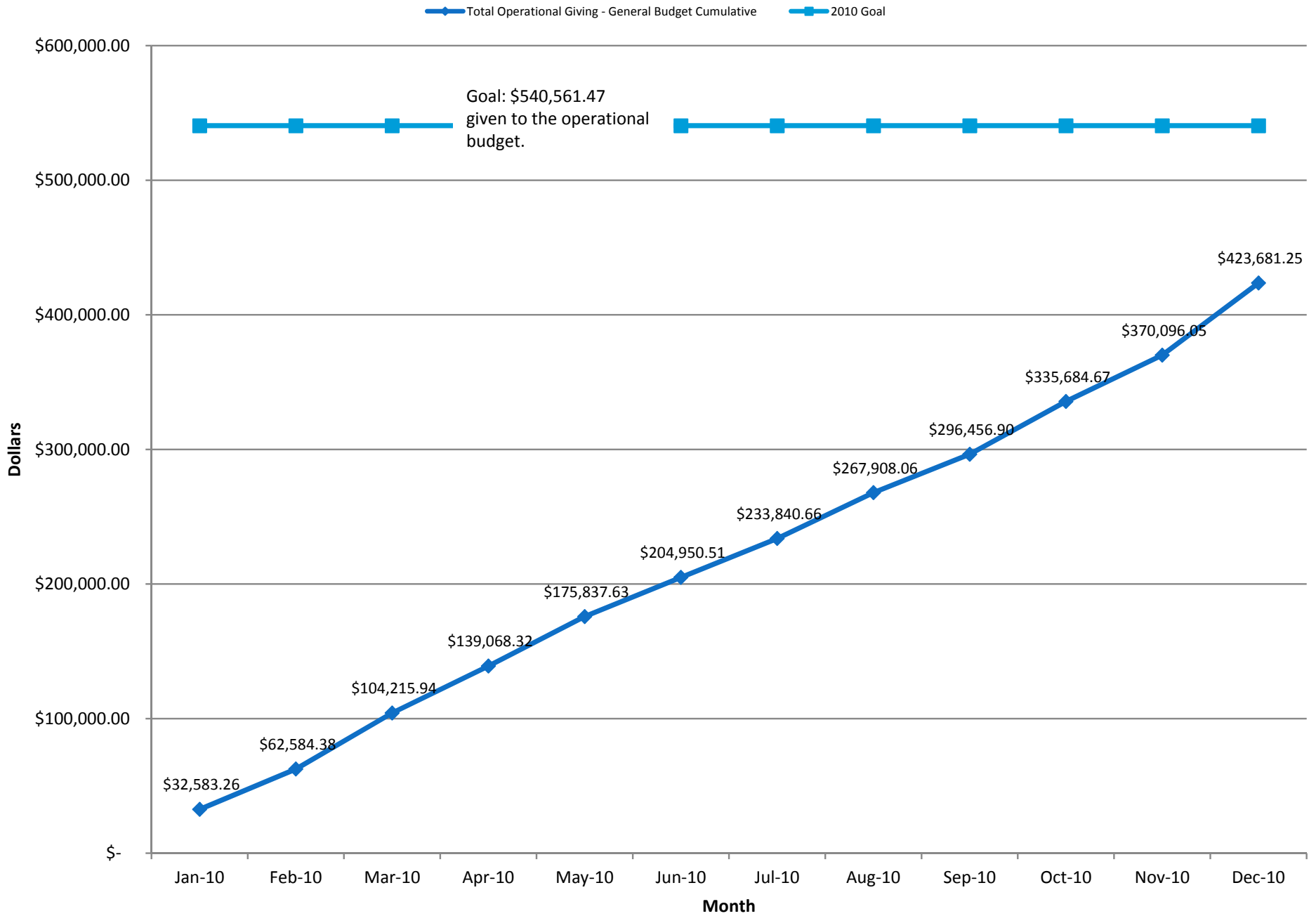


STEWARDSHIP

This goal measures the level of our congregational giving to operational purposes. This is not a budget number but the actual income received toward the operational budget. This number does not include giving to special building purpose, capital, debt reduction, or other special non-budget needs.

Goal: The goal is to increase this number by 10% each year. For 2010 the goal was \$540,561.

2010 Giving to Operational Budget vs Goal



2011 FIVE TALENT GOALS

- Based on 2010 year-end values, the 2011 Five Talent Goals are proposed to be:
 - Ministry with the Poor: 10% of annual operational giving supports ministry with the poor; \$46,605.
 - Worship: 5% annual increase in average worship attendance; 286 per week at two services; 293 including live webcasts.
 - Evangelism: Professions of faith represent 10% of average worship attendance; 29 join by profession of faith.
 - Faith Development: Small group participation represents 50% of average worship attendance; 143.
 - Stewardship: 10% annual increase in giving; \$466,049. **DRAFT**

TIMELINESS OF REPORTING

Monthly

Legs and all Committees

Bi-Monthly

Administrative Board

Quarterly

Report to Congregation
Bulletin Board
Website

